

# CaseWare SmartSync

## **CaseWare Goals**

- **Collaboration**
- **Single Data Source**

## **Previously**

- Sign-out /sign-in
- Check-out /check-in

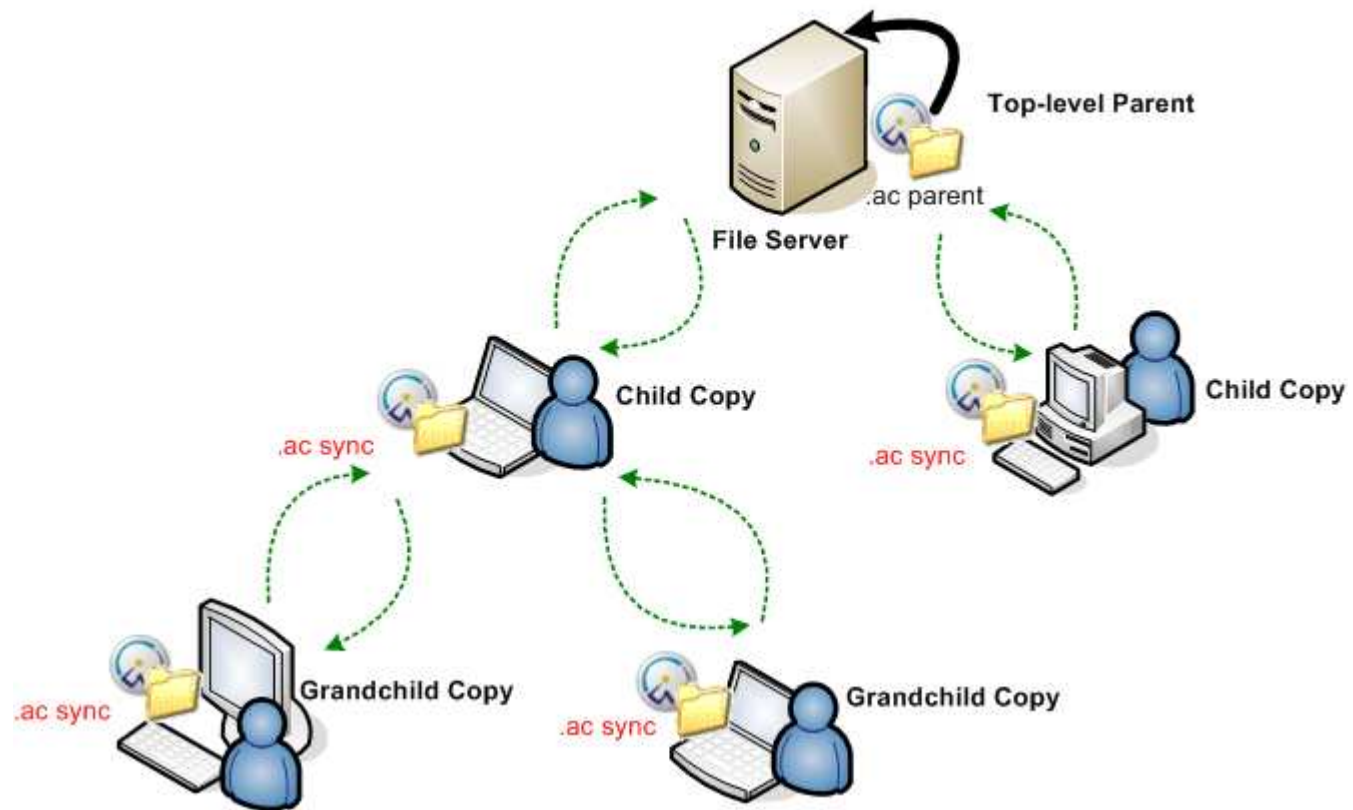
## **Now**

- Smartsync

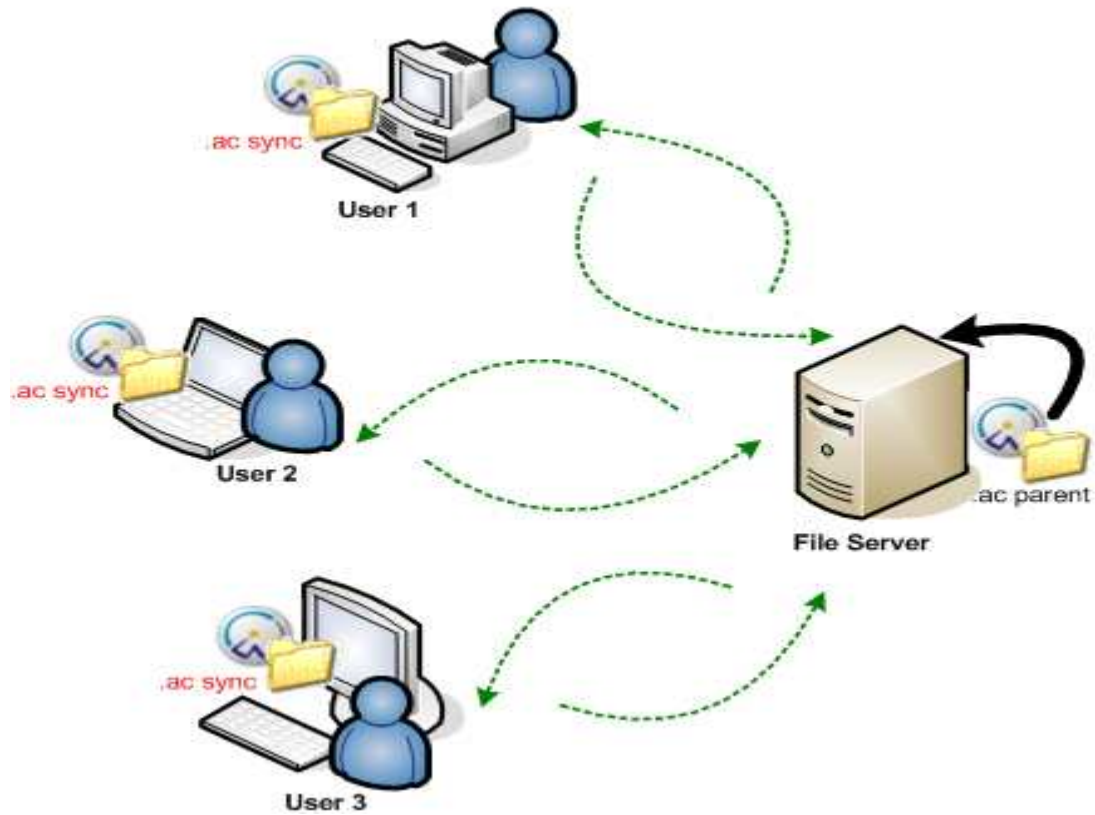
- Multiple users work on the same file
- Share changes when you work offline
- Networks with low bandwidth
- Working on unstable network
- Working offline

# **CaseWare Smartsync**

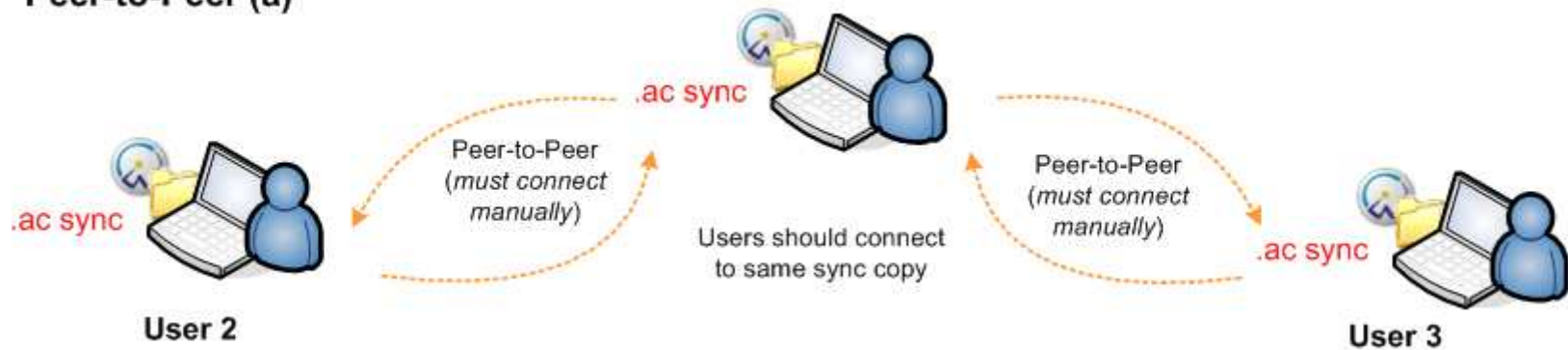
### Synchronization Hierarchy



**Online with Parent**



**Peer-to-Peer (a)**





Peer-to-Peer (b)

